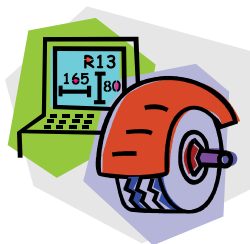
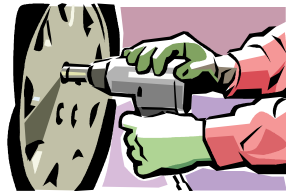


Auto Brakes & Suspension

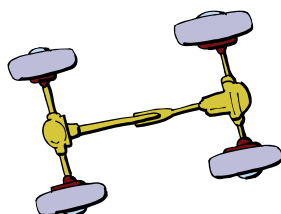
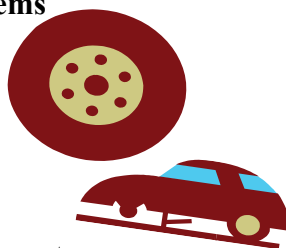
Understanding Automobile Braking Systems

- * Brake linings
- * Disc brakes
- * Drum brakes
- * Hydraulic systems
- * Brake fluid
- * Combination valve
- * Vacuum booster
- * How To Diagnose Automobile Braking Systems
- * Brake linings
- * Leaks
- * Brake pull
- * Low pedal
- * Pulsation
- * Brake noise
- * Illuminated ABS light



Understanding Automotive Steering Systems

- * Suspension system
- * Steering system
- * Alignment
- * Camber
- * Caster
- * Toe
- * Review of understanding automotive steering systems
- * How To Diagnose Auto Steering and Suspension Problems
- * Visual inspection
- * Dry park check
- * Ride height
- * Suspension inspection
- * Alignment



Performance Objectives

- ◆ Know how braking systems work.
- ◆ List the types of brake linings.
- ◆ Identify components of a disk brake assembly.
- ◆ Know how hydraulic systems work.
- ◆ Explain how a metering valve works.
- ◆ Describe how a vacuum booster works.
- ◆ Recognize the importance of leaks.
- ◆ Explain master cylinder bypassing.
- ◆ Identify causes of brake pull, low pedal and pulsation
- ◆ Identify causes of brake noise.
- ◆ Know how the suspension system works.
- ◆ Identify the different suspension systems.
- ◆ Explain the purpose of shock absorbers.
- ◆ Know how the steering system works.
- ◆ Explain how a recirculating ball steering system works.
- ◆ Explain how a rack-and-pinion steering system works.
- ◆ Explain how camber and caster affects steering.
- ◆ Identify when all wheels are in alignment.
- ◆ Explain how toe affects tire wear.
- ◆ Understand how to diagnose a steering complaint.
- ◆ Explain how to inspect tires.
- ◆ Explain how a rack-and-pinion steering system works.
- ◆ Explain how a recirculating ball steering system works.
- ◆ Identify incorrect wheel alignment.
- ◆ Diagnose a suspension complaint.
- ◆ When to replace struts.
- ◆ Identify suspension noises.
- ◆ Explain how to read tire wear indicators.
- ◆ How to do a visual suspension inspection.



Bring in your own car or truck and install brakes and check suspension with the help of your class.